

HSAJET®

Solvent Colour Ink

FOR HP TIJ 2.5

**A wide range of coloured ink cartridges
for industrial coding on almost any type of material**

When used in the new HSAJET® MCX printers, HSAJET® cartridges with smart card (SC) enable automatic detection of ink cartridge, auto adjustment of ink parameters and real time monitoring of ink level.



HSAJET® Frigg Coloured Solvent Inks (SC)

**B2501si Blue / G2502si Green / R2503si Red /
V2504si Violet / Y2505si Yellow**

for print on blister foils, films and coated substrates

These new coloured inks are from the same ink family as the K4055si Frigg Black solvent ink. They are dye-based coloured inks specifically designed to print on difficult media while providing exceptionally long decap time, reducing maintenance time and costs to a minimum. They have very good adhesion and perform well on non-porous substrates such as plastic films (PE, PET, PP), PVC, UV coats, and some metals.

Available for bulk applications.

HSAJET® B2025si Magne Blue Solvent Ink (SC)

for print on blister foils, films and coated substrates

B2025si is the blue version of the K4022si Thor Black Solvent Ink. It is specially designed to print on aluminium, blister foils, and other difficult substrates. It provides a durable, rubbing resistant, and high quality image with sharp edges.

It has very good adhesion and performs especially well on metallic surfaces, aluminium, blisters, OPP, PET film, UV coated papers, nylon as well as other glossy and non-porous substrates.

HSAJET® R2021si Sif Red Solvent Ink (SC)

for print on blister foils, films and coated substrates

R2021si is the red version of the K4022si Thor Black Solvent Ink. It is specially designed to print on aluminium, blister foils and other difficult substrates. It provides a durable, rubbing resistant and high quality image with sharp edges.

It has very good adhesion and performs especially well on metallic surfaces, aluminium, blisters, OPP, PET film, UV coated papers, nylon, as well as other glossy and non-porous substrates.

HSAJET® Y2042si Sigyn Yellow Solvent Ink (SC)

for print on dark or transparent non-porous substrates

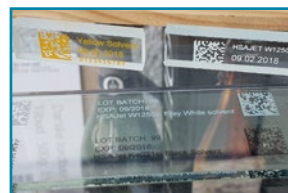
Y2042 is a solvent based yellow ink that prints a high quality image with excellent contrast on dark or transparent material. It performs well on coated and aqueous coated stock, OPP, PP, PET, PE, rubber, blister foils, glass, and other semi- and non-porous substrates. It provides a fast drying time of a few seconds and a good decap time for high productivity.

The yellow ink is pigment based.

HSAJET® W1250si Frey Solvent White Ink (SC)

for print on dark or transparent non-porous substrates

W1250si is a solvent based white ink that prints a high quality image with excellent contrast on dark or transparent material. It performs well on coated and aqueous coated stock, OPP, PP, PET, PE, rubber, blister foils, glass, and other semi- and non-porous substrates. It provides a fast drying time of a few seconds and a good decap time for high productivity. The white ink is pigment based.



HSAJET®

Solvent Colour Ink

FOR HP TIJ 2.5

Storage Conditions

Less than 24 hours:
Leave cartridge in printer.
Wipe and purge before use.

More than 24 hours:
Remove cartridge from printer and
place a cartridge clip over the head.
Wipe and purge before use.

W1250si and Y2042si. cartridges
should be stored nozzles up.

Storage Temperature

B2501si / G2502si / R2403si /
V2504si / Y2405si: 10-30°C

B2025si / R2021si / Y2042si /
W1250si / UI6060si: 15-35°C

Operating Temperature

B2501si / G2502si / R2403si /
V2504si / Y2405si: 10-40°C

B2025si / R2021si / Y2042si /
W1250si / UI6060si: 15-35°C

Shipping Info

Solvent based inks are flammable and
must ship according to UN1210/3.

Cartridge Maintenance and Handling

Clean the cartridge with a lint free cloth
and wipe slowly and lightly across the
diagonal edges with the printhead facing
down.

Cleaning of Solvent Inks

Use HSAJET® Cleaning Tissues containing
Isopropyl Alcohol.

White and Yellow inks

Follow specific instructions for
handling of W1250si and Y2042si.
Available upon request.

HP45si cartridge

The solvent based inks are delivered
in the HP45si print cartridge, which
is a cartridge specially optimised for
solvent inks to print on non-porous
material.

The HP45si runs at faster speeds and
prints at longer throw distance than
the standard HP45A cartridge.

Ink name	Colour	Ink type	Substrates	Fill volume	Avg. delivered ink ¹	Colourant Type	Shelf life	Voltage	Pulse width	Dry time ²	Decap time
B2501si / G2502si / R2403si / V2504si / Y2405si	Blue, green, red, violet, yellow	Solvent	Semi- and non-porous	43 ml	31-34 ml	Dye	10 mths	8.6 V	1.8 µsec	1-5 sec	> 12 h (Green < 10 min)
B2025si	Blue	Solvent	Semi- and non-porous	45 ml	29 ml	Dye	6 mths	9.6 V	1.6 µsec	2-5 sec	1 hour
R2021si	Red	Solvent	Semi- and non-porous	45 ml	29 ml	Dye	6 mths	9.6 V	1.6 µsec	2-5 sec	1 hour
Y2042si	Yellow	Solvent	Dark and transparent semi- and non-porous	45 ml	30 ml	Pigment	6 mths	9.0 V	1.8 µsec	1-5 sec	1 hour
W1250si	White	Solvent	Dark and transparent semi- and non-porous	45 ml	34 ml	Pigment	6 mths	9.0 V	1.8 µsec	1-5 sec	< 30 min

¹ Average delivered ink volume is application dependent and varies from actual fill volume

² Substrate dependent

** Recommended pulse warming: Off

HP45si cartridge



BSF 475 ml
bulk ink bottle
(Available for
B2501si, G2502si,
R2403si, V2504si,
Y2405si)



SI1 cartridge
for BSF

DISTRIBUTOR:



HSA Systems (head offices)
DENMARK +45 6610 3401

HSA Systems (subsidiary offices)
FRANCE +33 1 4815 5050 | GERMANY +49 4331 203 9755

www.hsasystems.com | mail@hsasystems.com